

Hantile product handbook

Hanergy Thin-Film Power Group Ltd.

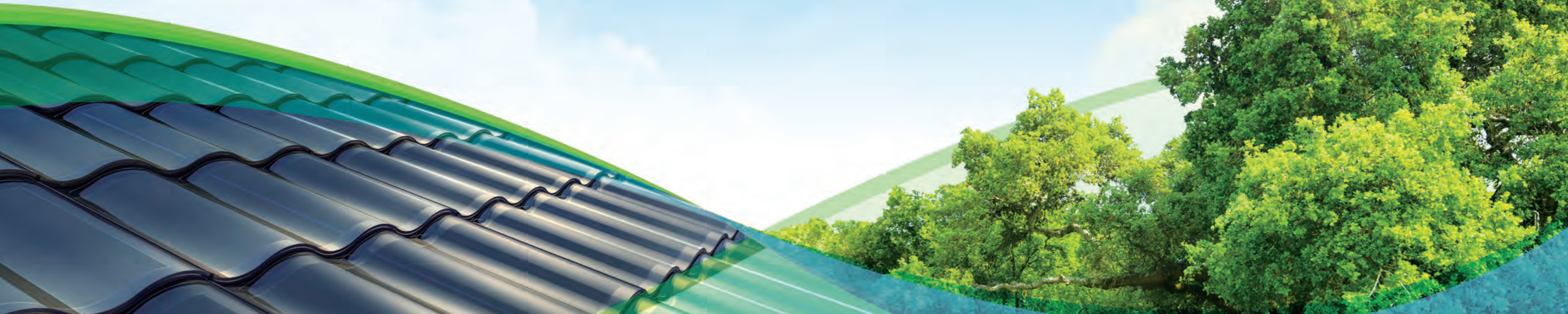
Address: NO.0-A, Anli Road, Chaoyang District, Beijing

Website: <http://www.hanergy.com>

Hotline: 400-688-1566

Statement: The information in this document is for reference only and does not constitute any offer or commitment. The above information may be modified by Hanergy without prior notice.

One Hantile One Tree



Hantile Series



Double-Glass Hantile series

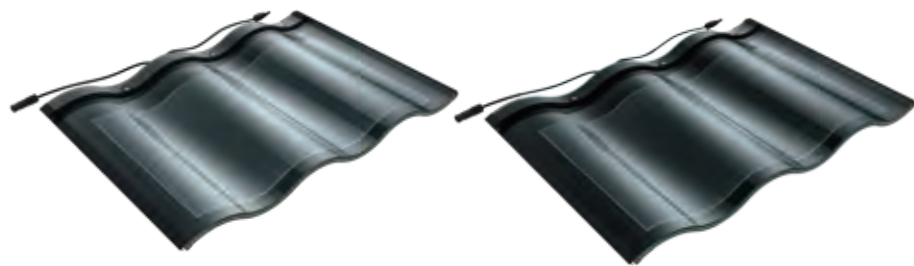
It is gleaming and with graceful curve, inheriting the beauty of glaze. Thin-film solar core technology will lead the fashion.



Double-Glass Triple-Arch Hantile Standard Edition

30W

It suits to small architecture's roof, satisfying your aesthetic sense. For example: Villas, houses, special-feature towns, etc.



gray

black

Physical parameters

product model: HW-MQSB-V1、HW-MQSG-V1
length: 500mm
width: 718mm
arch height: 41mm
weight: 10KG
color: black, gray
junction box: 39*46*16.6 (mm) IP67
cable type: 2.5mm solar cable 450 (+10/-0) mm
cable connector: MC4

Electrical parameters

chip type: CIGS
power: 30W
short-circuit current: 4A
open-circuit voltage: 10.6V
current at PMPP: 3.5A
voltage at PMPP: 8.6V

Function grade

loading grade: 2400Pa
waterproof grade: IP67
fire-proof grade: A
hail-proof grade: level 4 (ANSI FM 4473)
working temperature: -40°C to +85°C

The standard edition of double-glass triple-arch Hantile's (30W) effect drawing



Single-Glass Hantile series

It inherits the culture of Chinese ancient architecture and expresses the unique beauty of the roof.



Single-Glass Spool Hantile Lap-Joint Edition **7.4W**

It suits for ancient architecture and pseudo-classic architecture, classical and beautiful, and its structure is well arranged.

Single-glass spool Hantile lap-joint edition's (7.4W) effect drawing



Physical parameters

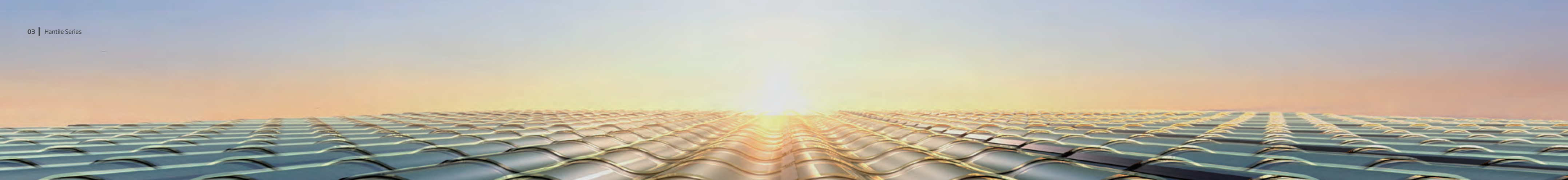
product model: HW-M007DB1C
length: 400mm
width: (160,185) mm
arch height: (80,92.5) mm
weight: 1.08KG
color: black
junction box: 66.3*65.8*25.2(mm)IP67
cable type: 2.5mm solar cable 450 (+10/-0) mm
cable connector: MC4


Electrical parameters

chip type: CIGS
power: 7.4W
short-circuit current: 2.115A
open-circuit voltage: 4.82V
current at PMPP: 1.89A
voltage at PMPP: 3.91V

Function grade

loading grade: 2400Pa
waterproof grade: IP67
fire-proof grade: B1
hail-proof grade: level 4 (ANSI FM 4473)
working temperature: -40°C to +85°C



 The installation instruction of Hantile

Easy installation and good durability

Hantile has fine sealing performance as being waterproof, fire-proof and wind-proof. It has superior performance and long durability.



 Hanergy promises a lifetime warranty

Tile


If Hantile has quality problems, Hanergy will offer a lifelong maintenance and replacement.

Inverter

For the inverter, Hanergy provides a 5-year quality-maintenance service. During this period, Hanergy is responsible for the free maintenance of the inverter. If a same fault of the inverter is repeated three times or more, Hanergy will provide a free replacement.

Other accessories and auxiliary materials

Hanergy provides a maintenance service for the accessories and auxiliary materials by manufacturer's standard.

 With 5 certifications and 1 insurance, the security and reliability is guaranteed



Hantile whole series's Product Liability Insurance is underwritten by PICC.



Hantile has passed the China Compulsory Certification of building product.



Hantile has passed the Product Quality Certification of security and function.



Hantile has passed the TÜV Certification of security and function in Germany.



Hantile has met the security requirements of the Canadian and American markets at the same time, and has passed the UL Certification of fire-proof in the US.



Hantile has passed the CE Certification.